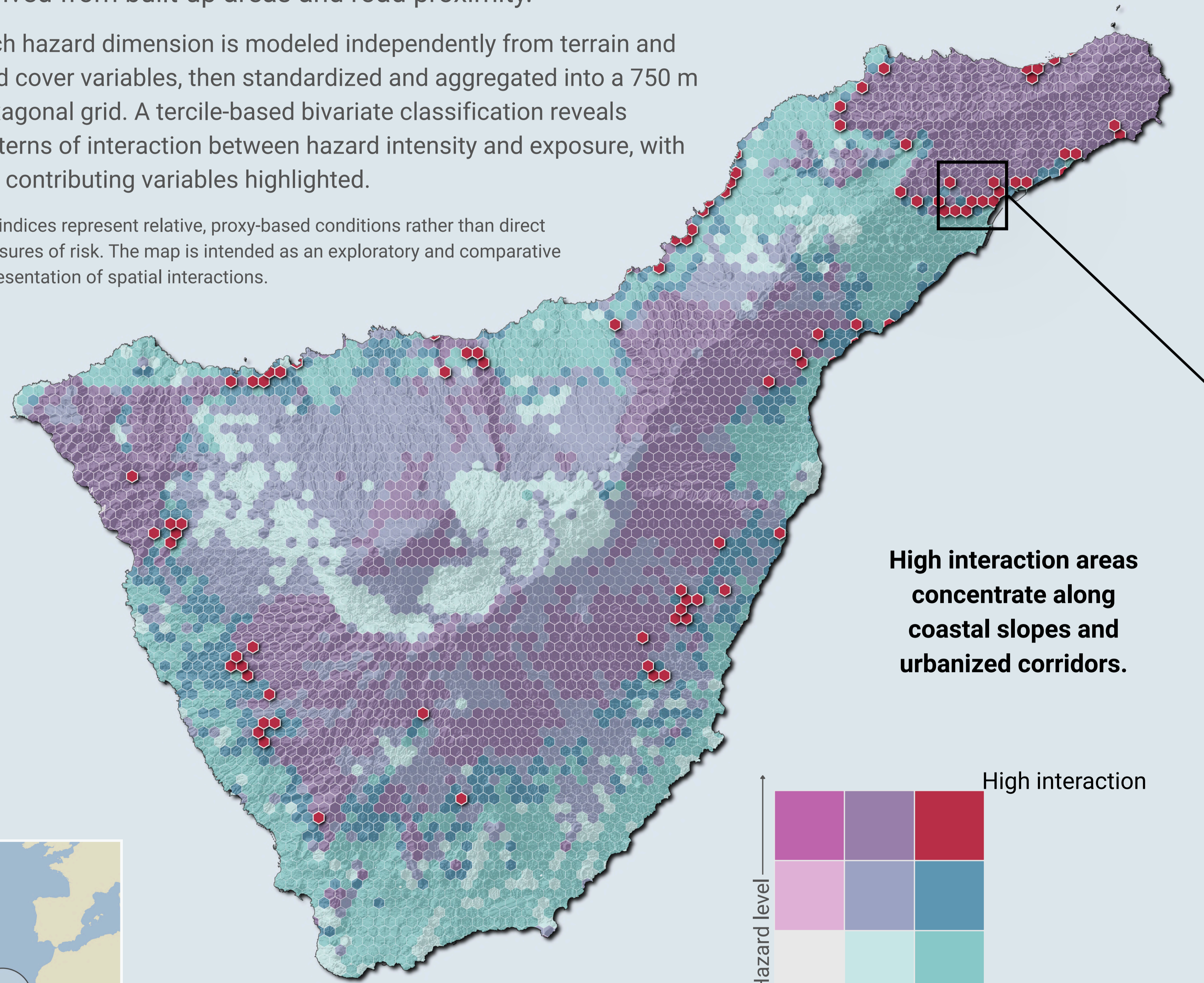


Where Hazards and People Intersect: Relative Multi-Hazard and Exposure in Tenerife

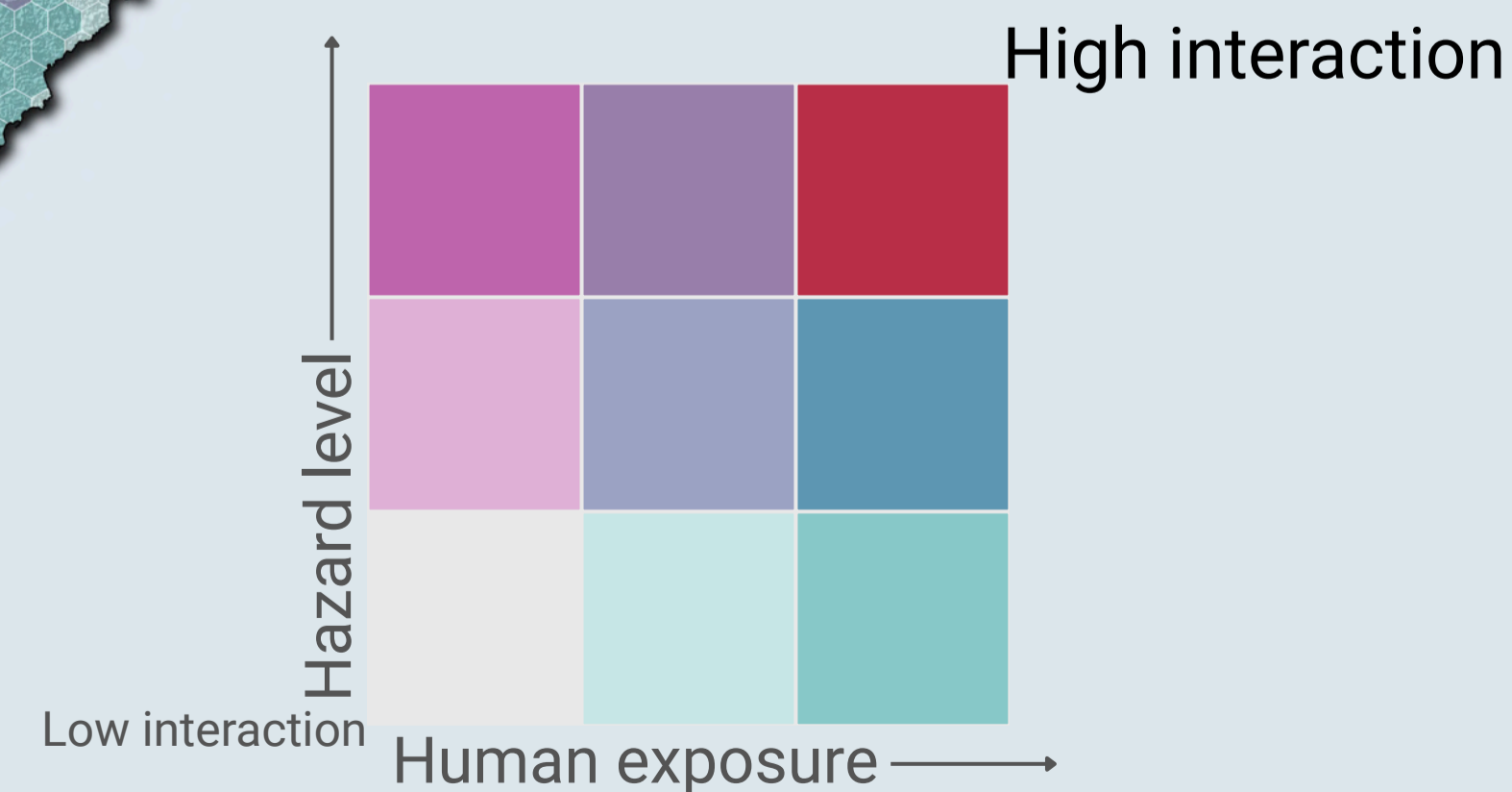
This map identifies areas where multiple hazard conditions overlap with human presence across Tenerife. Wildfire, runoff, and landslide indices are combined with an exposure proxy derived from built-up areas and road proximity.

Each hazard dimension is modeled independently from terrain and land cover variables, then standardized and aggregated into a 750 m hexagonal grid. A tercile-based bivariate classification reveals patterns of interaction between hazard intensity and exposure, with key contributing variables highlighted.

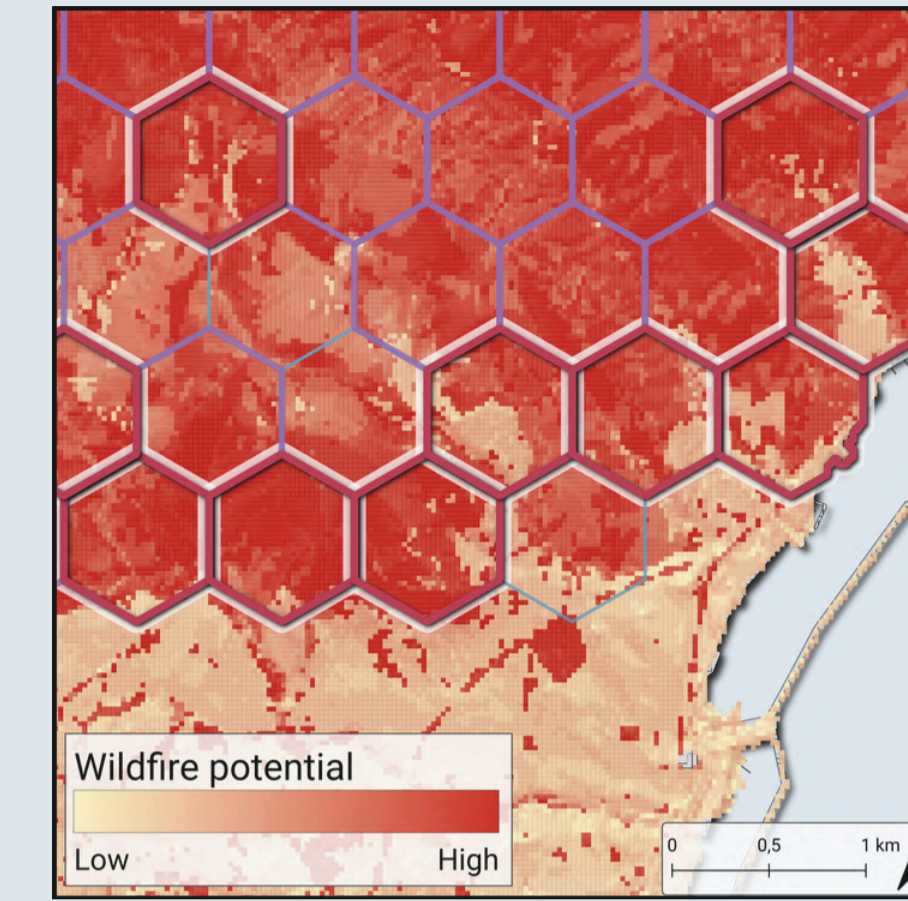
The indices represent relative, proxy-based conditions rather than direct measures of risk. The map is intended as an exploratory and comparative representation of spatial interactions.



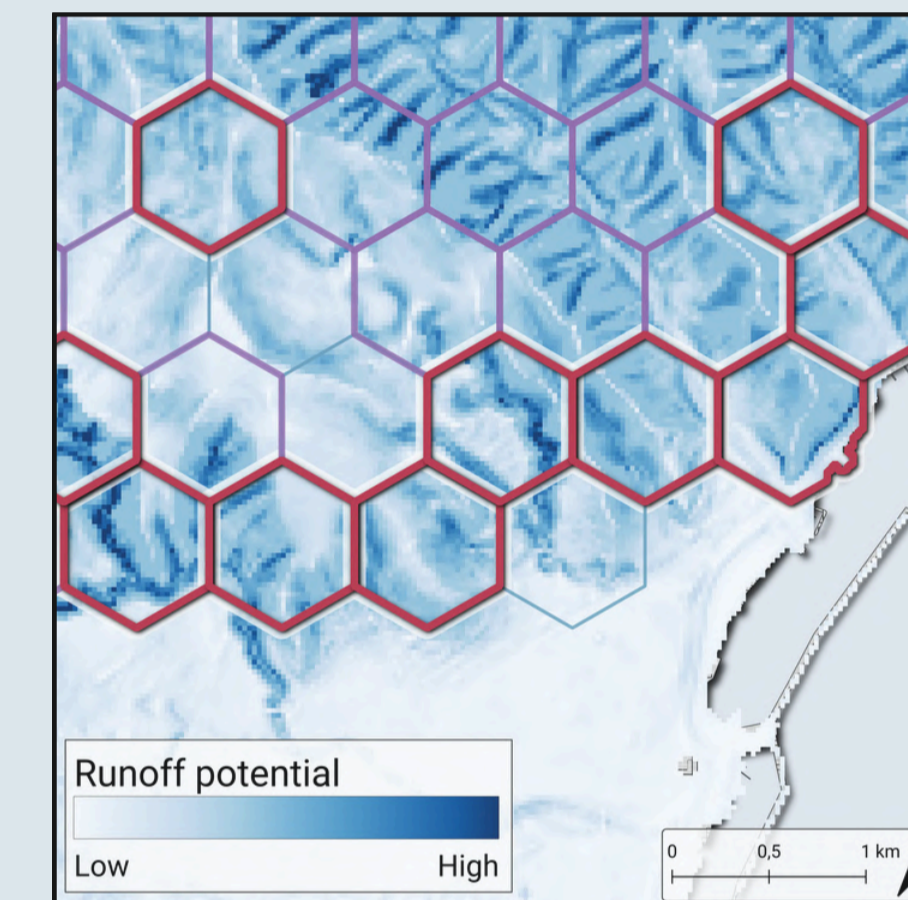
High interaction areas concentrate along coastal slopes and urbanized corridors.



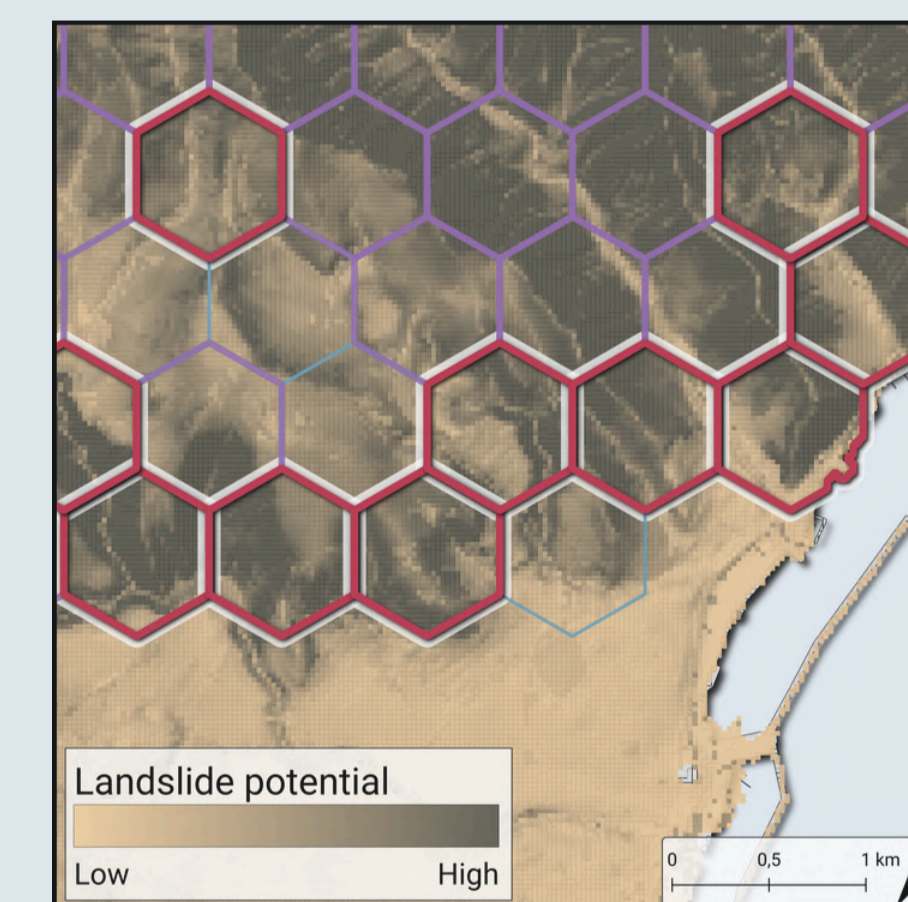
What drives this interaction?



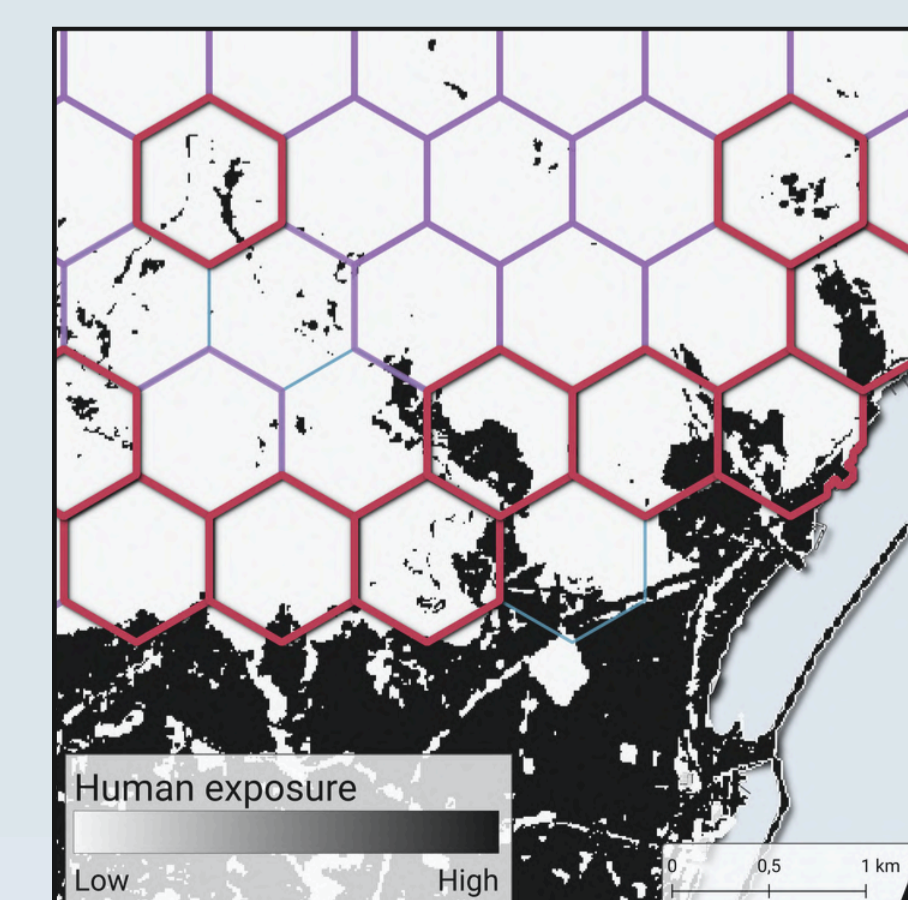
WILDFIRE POTENTIAL
Vegetation cover, slope, and south-facing terrain combine to elevate the wildfire index, reflecting relatively dry and fuel-rich conditions.



RUNOFF POTENTIAL
Topographic convergence and proximity to **drainage paths** enhance the runoff index, highlighting areas where surface flow is more likely to concentrate.



LANDSLIDE POTENTIAL
Steep slopes, high local relief, and coastal escarpments contribute to higher landslide index values, indicating terrain prone to instability.



INFRASTRUCTURE EXPOSURE
Built-up areas and road proximity reinforce the exposure index, representing concentrations of human presence proxies.

